

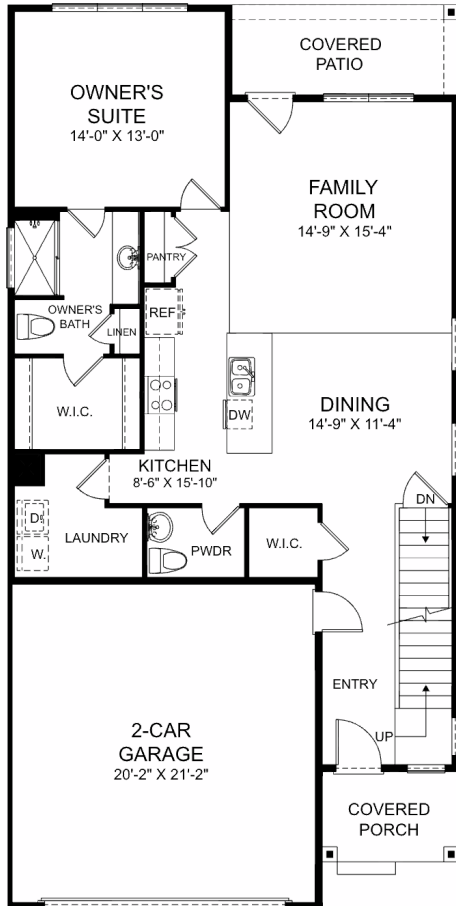
## unique features:

- Expansive, main floor primary suite
- Covered front porch & back patio
- Main floor laundry room and bath
- Two bedrooms, a full bath, and a storage closet upstairs
- Light-filled dining and living rooms.
- Footprint: 30' wide x 60' deep

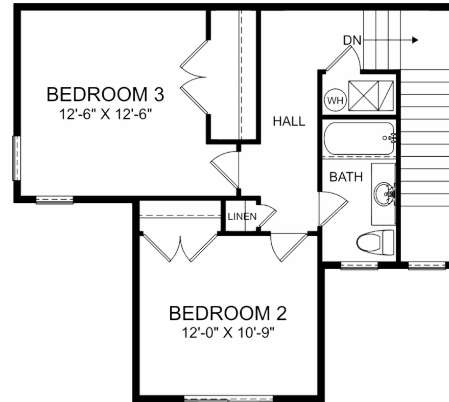
## example customizations:

- Tray ceiling in primary suite
- Dual sinks in primary suite
- 10ft ceiling in living, kitchen, and dining rooms
- Shelving over laundry
- Finished basement with extra bedroom, bath, & family room

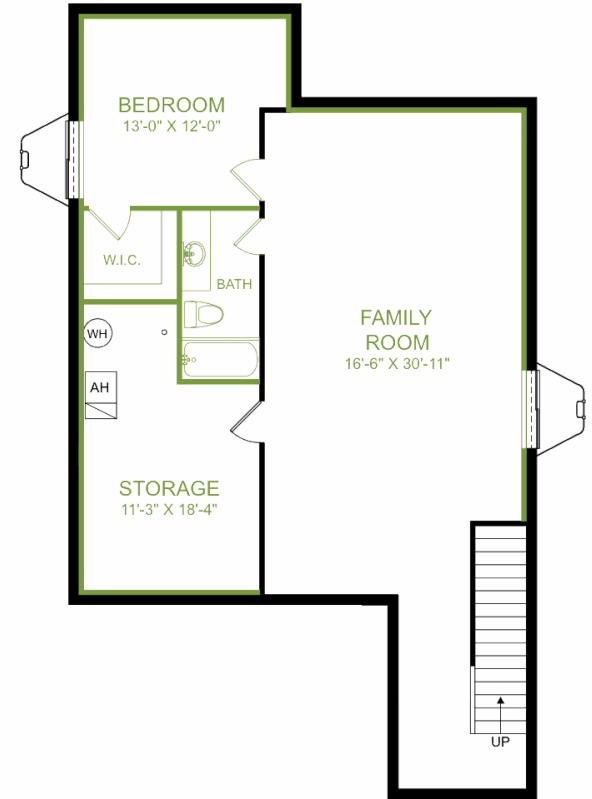
main floor



second floor



optional basement



discover more options with our interactive floorplans

customize this floorplan



the katherine